

CARTWRIGHT  
ENGLAND  
& BUTLER

---

PRODUCT RANGE 2023

---

*Featuring Our*  
Winter Wonderland Christmas Collection

## CARTWRIGHT & BUTLER

From our English heritage rooted in East Yorkshire, stems our love of the Great British Tea Time. Think English Afternoon Tea with an adventurous twist; we are curators & creators in pursuit of deliciousness. Flavour and quality are our priority we deliver the most indulgent and delicious teatime treats all packaged up with a personable touch – just perfect for gifting. Our tasty and timeless classics create moments of joy that we hope will bring our customers moreish memories to cherish.

*One family. Five generations. One enduring love for joy-filled food.*

## OUR PROMISE TO YOU

Our expert Sales and Customer Service teams are on hand to help you select the perfect range, whatever your needs. We provide the very best service with a personal touch and we look forward to developing and maintaining a successful and long-term relationship with you.

Order Cartwright & Butler by 2pm for next day delivery.  
(applicable for mainland Britain)

Please contact our sales team  
**sales@cartwrightandbutler.co.uk**

**03033 001 005**

Monday - Friday, 08:00 - 17:00  
General Enquiries: 01482 213 446

For our latest products, offers and for terms and conditions visit  
**cartwrightandbutler.co.uk**

## CONTENTS

---

<b>06</b>	<b>Christmas</b>
<b>06</b>	Winter Wonderland Collection
<b>10</b>	Christmas Classics
<b>14</b>	Advent Calendars
<b>16</b>	Retail-Ready
<b>20</b>	<b>Gifting</b>
<b>21</b>	Selection Tins
<b>24</b>	Best-Selling Tins
<b>28</b>	Luxury Cakes
<b>30</b>	Trios of Treats
<b>34</b>	<b>Confectionary &amp; Chocolate</b>
<b>44</b>	<b>Biscuit Cartons</b>
<b>50</b>	<b>Cheeseboard &amp; Savoury Essentials</b>
<b>54</b>	<b>Chutney</b>
<b>60</b>	<b>Preserves &amp; Table Sauces</b>
<b>66</b>	<b>Drinks</b>
<b>76</b>	<b>Special Occasions &amp; Seasonal</b>
<b>88</b>	<b>Show Us Your Shelves!</b>
<b>90</b>	<b>Our Sustainability Journey</b>

## WINTER WONDERLAND COLLECTION 2023

Our Winter Wonderland collection is a brand new, Limited Edition range for 2023, designed and hand drawn by our in-house designer. The design captures the magic of the Christmas season with an intricate winter wonderland design. The classic Christmas palette with metallic gold detail and heavily embossed tins are wonderfully captivating on-shelf. New for this year, the range includes a mechanised Musical Tin containing a festive biscuit, cotton tea towel and re-purposable keepsake tins with our Christmas Wishes message.



## WINTER WONDERLAND COLLECTION 2023



Christmas Wishes Tin with English Breakfast Teabags

90g • **CODE:** 4179



Christmas Wishes Tin with Cranberry & Orange Shortbread

200g • **CODE:** 4173



Belgian Chocolate Selection

100g • **CODE:** 4178



Cranberry & Orange Mini Mince Pies in Tin

120g • **CODE:** 4309



Cranberry & Orange Mini Mince Pies

120g • **CODE:** 4174



Musical Christmas Wishes Tin with Dark Chocolate Orange Biscuits

200g • **CODE:** 4177



Turkish Delight Selection

250g • **CODE:** 4171



Winter Spiced Orange & Cranberry Shortbread

200g • **CODE:** 4175



Christmas Wishes Cotton Tea Towel

**CODE:** 4419



## WINTER WONDERLAND COLLECTION 2023



Christmas Wishes Festive Biscuit Selection

3 x 200g • **CODE:** 4310

The most wonderful Christmas gift!  
This trio includes our Demerara Shortbread Rounds, Milk Chocolate Chunk Biscuits and Winter Spiced Orange & Cranberry Shortbread Rounds. Perfect with a Christmas cuppa!



Christmas Wishes Festive Fudge Trio

3 x 200g • **CODE:** 4311

The most festive selection of fudges to satisfy your cravings. Delve into Whiskey Fudge, Gingerbread Fudge and Sea Salted Fudge.



The Christmas Wishes Teatime Selection

390g • **CODE:** 4169

The perfect Christmas gift for 2023, presented in our Limited Edition Christmas Wishes tin, containing delicious Chocolate Brownie Biscuits, Winter Spiced Shortbread and English breakfast tea.



## CHRISTMAS CAKES & PUDDINGS



Iced Christmas Loaf Cake

660g • **CODE:** 4954



Christmas Loaf Cake

530g • **CODE:** 4953



Iced Christmas Round Cake

700g • **CODE:** 4494



Decorated Jewel Fruit Cake

700g • **CODE:** 4495



Christmas Pudding with Marzipan Centre

454g • **CODE:** 5267



Christmas Pudding with Orange Liqueur

454g • **CODE:** 5268

## Traditional Christmas Pudding

908g • **CODE:** 5269



## CHRISTMAS CLASSICS

Luxury Mince Pies With Brandy

330g • CODE: 4000



Classic Cranberry Sauce

150g • CODE: 4172



Dark Chocolate with Orange Florentines

100g • CODE: 4001



Mulled Wine Spiced Bags

21g • CODE: 4154



Spiced Winter Blend Tea

100g • CODE: 4989



Boxing Day Chutney

250g • CODE: 4223



Chocolate Advent Calendar

310g • CODE: 4399

## ADVENT CALENDARS



12 Days Of Christmas Calendar

**CODE:** 3149

On the first day of Christmas Cartwright & Butler gave to me...  
12 delicious treats!  
The gigantic 12 Days of Christmas Box returns!  
Includes 12 sliding drawers, each drawer reveals a best-selling treat from Cartwright & Butler. The collection includes sweet and savoury biscuits, preserves, hot drinks, and confectionery.



Advent Calendar

**CODE:** 3151

'Tis the season to indulge. Countdown to Christmas with a delicious selection of finest Cartwright & Butler treats each day.  
Brand new in 2021, this beautifully illustrated, gigantic Advent Calendar with 24 sliding drawers includes an array of Cartwright & Butler's best-selling goodies.



## RETAIL-READY HAMPERS

This range of hampers are also available with Christmas themed sleeves, please contact us for more information



The Good Morning Gift Box

**CODE:** 4242



The Share a Treat Gift Set

**CODE:** 3557



Beer & Nibbles Gift Box

**CODE:** 3571



The Family Favourites Sharing Box

**CODE:** 4245



The Sweet Shop Selection Box

**CODE:** 3575



Thinking of You Today Gift Box

**CODE:** 3628

## RETAIL-READY GIFT BOXES



The Teatime Selection Gift Box

**CODE:** 3544



The Afternoon Treats Gift Box

**CODE:** 3545



The Vegan Gift Box

**CODE:** 3140

## BEST-SELLING GIFT TIN

Our signature Brew & Biscuits Gift Tin is one of our C&B best-sellers! And it's easy to see why; this re-usable gift tin is packed to the brim with our favourite flavours of biscuit plus two classic brews – presented with retail-ready special occasion or fully bespoke gift sleeve.



*Best-Seller!*

The Brew & Biscuits Gift Tin

CODE: 4523



Winter Favourites Gift Tin

CODE: 3084

PERFECT FOR GIFTING

Teatime Treats Shortbread & Beverage Selection

730g · CODE: 5569



## SELECTION TINS



Tea for Two with Almond Shortbread

240g • **CODE:** 4883



Time for Tea Selection

240g • **CODE:** 5244



Shortbread Selection with Salted Caramel & Almond

300g • **CODE:** 4784



Tea Time Selection

580g • **CODE:** 4681



Luxury Biscuit Assortment

200g • **CODE:** 4496



Tea Selection Tin

285g • **CODE:** 4395



Afternoon Tea & Biscuits Selection

390g • **CODE:** 4904



Chocolate Lover's Assortment

575g • **CODE:** 5566



Teatime Fudge Assortment

700g • **CODE:** 5567



Teatime Shortbreads Selection

400g • **CODE:** 5568

### BEST SELLING TINS

Cranberry Oat Crumbles

200g • **CODE:** 4853

Milk Chocolate Chunk Biscuits

200g • **CODE:** 4465

Ginger Biscuits

200g • **CODE:** 4852



Salted Caramel Biscuits

200g • **CODE:** 4488

Triple Choc Chunk Biscuits

200g • **CODE:** 4464

Strawberry & White Chocolate Biscuits

200g • **CODE:** 4466

### LUXURY BISCUIT TINS



Lemon & Dark Chocolate Viennese Whirls

200g • **CODE:** 4570



Ultra Thick Dark Chocolate Orange Biscuits

190g • **CODE:** 5279



Ultra Thick Dark Chocolate Ginger Biscuits

190g • **CODE:** 5277



*Best-Seller!*

Ultra Thick Milk Chocolate Salted Caramel Biscuits

190G • **CODE:** 5278



Maple & Pecan Dark Chocolate Digestives

200g • **CODE:** 4571



Almond Shortbread Rounds

300g • **CODE:** 5224



Sea Salted Caramel Oat Crumbles

300g • **CODE:** 4910



Chocolate Brownie Biscuits

300g • **CODE:** 5222

## THE BRITISH COLLECTION



Strawberry & Clotted  
Cream Biscuits

200g • **CODE:** 3007

Sea Salted Caramel  
Oat Crunch Biscuits

200g • **CODE:** 3008

Chocolate Brownie  
Biscuits

200g • **CODE:** 3009

Our Great British Tins are a perfect souvenir of Great Britain. Featuring iconic British landmarks in this illustrated design and containing some classic flavours of our favourite biscuits. Serve with a cup of tea for a perfect British Teatime treat.

## SHORTBREAD TINS



Demerara Shortbread Rounds

200g • **CODE:** 5175



Lemon Zest Shortbread Rounds

200g • **CODE:** 5176



Flaked Almond Shortbread Rounds

200g • **CODE:** 5177



Chocolate Drop Shortbread Rounds

200g • **CODE:** 5179



Salted Caramel Shortbread Rounds

200g • **CODE:** 5178



Pistachio Shortbread Rounds

200g • **CODE:** 4902

## LUXURY CAKES



Luxury Chocolate Loaf Cake

430g · **CODE:** 4493



Cherry & Almond Loaf Cake

550g · **CODE:** 4475



Date & Walnut Loaf Cake

550g · **CODE:** 4473



Apricot & Fig Loaf Cake

550g · **CODE:** 4474



Cherry & Almond Decorated Fruit Cake

700g · **CODE:** 4467



Fruit Cake Slice

75g · **CODE:** 4396



## TRIOS OF TREATS



Trio of Fudge

3 x 175g • **CODE:** 4283



Trio of Biscuits

3 x 200g • **CODE:** 4282



Trio of Sweets

190g x2 , 170g x1 • **CODE:** 4312

Our trio-packs of delicious treats are perfect for gifting and are personalisable with our range of occasion or sentiment message gift-sleeves.



## OCCASION & SENTIMENT OPTIONS

### FUDGE TRIOS



Thank You

3 x 175g • **CODE:** 4314



Happy Birthday

3 x 175g • **CODE:** 4286



Congratulations

3 x 175g • **CODE:** 4315



A Special Grandma

3 x 175g • **CODE:** 4293



With Love

3 x 175g • **CODE:** 4287

### BISCUIT TRIOS



Thank you

3 x 200g • **CODE:** 4284



Happy Birthday

3 x 200g • **CODE:** 4285



Congratulations

3 x 200g • **CODE:** 4316



A Special Nanny

3 x 200g • **CODE:** 4292



A Wonderful Mum

3 x 200g • **CODE:** 4291



---

CONFECTIONARY & CHOCOLATE

---



## CHOCOLATE & SPECIALITY COLLECTION



Chocolate Praline Heart Selection

160g • **CODE:** 5570



Luxury Chocolate Praline Selection

187g • **CODE:** 5571



Italian Nougat Selection

240g • **CODE:** 4649



Salted Milk Chocolate Thins

150g • **CODE:** 5264

Dark Chocolate Ginger Thins

150g • **CODE:** 5283

Mint Dark Chocolate Thins

150g • **CODE:** 5263

Champagne Truffles

180g • **CODE:** 4002

Sea Salted Truffles

180g • **CODE:** 4003

Hazelnut Chocolate Truffles

180g • **CODE:** 4676



CONFECTIONARY TINS



Classic Butter Fudge

175g • **CODE:** 5233



Salted Caramel Fudge

175g • **CODE:** 5234



Belgian Chocolate Fudge

175g • **CODE:** 4612



Strawberry & Clotted Cream Fudge

175g • **CODE:** 4893



Rum & Raisin Fudge

175g • **CODE:** 4150



Gingerbread Fudge

175g • **CODE:** 4222



Whisky Fudge

175g • **CODE:** 4241



Butter Toffees

130g • **CODE:** 5261



Sea Salted Toffees

130g • **CODE:** 5262



Peanut & Popcorn Brittle

100g • **CODE:** 5565

### CONFECTIONARY JARS & CARTONS



Fruit Jellies

190g • **CODE:** 4663



Pattern Fruit Candies

170g • **CODE:** 4664



Sherbet Pips

190g • **CODE:** 4665



Sour Apple Sweets

170g • **CODE:** 4666



Rhubarb & Custard Sweets

190g • **CODE:** 4667



Lemon & Tangerine Sweets

190g • **CODE:** 4668



Mint Imperials

190g • **CODE:** 4669



Cola Cubes

190g • **CODE:** 4670



Sea Salted Almonds in Milk Chocolate

150g • **CODE:** 5240



Original Butter Toffee

130g • **CODE:** 5271



Fruit Jellies

190g • **CODE:** 4693



Pattern Fruit Candies

170g • **CODE:** 4694



Sherbet Pips Sweets

190g • **CODE:** 4695



Sour Apple Sweets

170g • **CODE:** 4696



Rhubarb & Custard Sweets

190g • **CODE:** 4697



Lemon & Tangerine Sweets

190g • **CODE:** 4698



Mint Imperials

190g • **CODE:** 4699



Cola Cubes

190g • **CODE:** 4700



Peanut & Popcorn Brittle

100g • **CODE:** 5564



Sea-Salted Toffees

130g • **CODE:** 5272

FUDGE CARTONS & BARS

NEW FOR 2023 • NEW RANGE • NEW FOR 2023



Raisins in Milk Chocolate

175g • CODE: 4296

Coffee Beans in Dark Chocolate

175g • CODE: 4297

Strawberry & White Chocolate Nibbles

175g • CODE: 4298

Almonds in Dark Chocolate

175g • CODE: 4295



100% PLANT-BASED • 100% PLANT-BASED  
Vegan

Vegan Sea Salted Fudge

175g • CODE: 4167



Whisky Fudge

175g • CODE: 4402



Gingerbread Fudge

175g • CODE: 4401



Butter Fudge Bar

95g • CODE: 4148



Classic Butter Fudge

175g • CODE: 5231



Sea Salted Fudge

175g • CODE: 5232



Belgian Chocolate Fudge

175g • CODE: 4611



Sea Salted Fudge Bar

95g • CODE: 4400

## BISCUIT CARTONS



## BISCUIT CARTONS



Butterscotch Crunch Biscuits

200g • **CODE:** 3648

Salted Caramel Biscuits

200g • **CODE:** 4675

Stem Ginger Biscuits

200g • **CODE:** 5287

Cranberry Oat Crumbles

200g • **CODE:** 5293

Maple &amp; Pecan Dark Chocolate Digestives

200g • **CODE:** 2996

Milk Chocolate Chunk Biscuits

200g • **CODE:** 2995*Best-Seller!*

Butter Oat Crumbles

180g • **CODE:** 5288

Chocolate Wafer Rounds

120g • **CODE:** 5563

Gluten Free Oat Crumbles

180g • **CODE:** 4610

Dark Chocolate Gingers

200g • **CODE:** 3646

Chocolate Oat Crumbles

200g • **CODE:** 3647

Triple Chocolate Chunk Biscuits

200g • **CODE:** 4674

Lemon &amp; Dark Chocolate Viennese Whirls

200g • **CODE:** 2997

Vegan Dark Chocolate Chunk Biscuits

200g • **CODE:** 4004

Strawberry &amp; White Chocolate Biscuits

200g • **CODE:** 2994

Chocolate Wafer Crispiers

140g • **CODE:** 5561



## SHORTBREAD CARTONS



Demerara Shortbread Rounds

200g • **CODE:** 5185



Lemon Zest Shortbread Rounds

200g • **CODE:** 5186



Flaked Almond Shortbread Rounds

200g • **CODE:** 5187



Chocolate Drop Shortbread Rounds

200g • **CODE:** 5189



Salted Caramel Shortbread Rounds

200g • **CODE:** 5188



Shortbread Assortment Box

400g • **CODE:** 4155

Triple Chocolate Chunk Biscuits Twin Pack

35g • **CODE:** 4776

Salted Caramel Biscuits Twin Pack

35g • **CODE:** 4777

Demerara Shortbread Twin Pack

40g • **CODE:** 4778



---

BUILD THE PERFECT CHEESEBOARD

---



## BOARDS & KNIVES

---



Lytton House Acacia Wood Cheese Platter with Knife

**CODE:** 6301



Lytton House Acacia Wood Rectangular Cheese Board & Slate

**CODE:** 6302



Lytton House Acacia Wood Round Cheese Board & Slate

**CODE:** 6303



Lytton House Olive Wood Cheese Set

**CODE:** 6300



## CHUTNEY



Yorkshire Chutney

240g • **CODE:** 5315



Tomato & Apple Chutney

250g • **CODE:** 5317



Real Ale Chutney

250g • **CODE:** 5323



Red Onion Chutney

280g • **CODE:** 5319



Caramelised Onion Chutney

250g • **CODE:** 5316



Fig Chutney

250g • **CODE:** 4837



Tomato & Chilli Chutney

270g • **CODE:** 5325



Piccalilli

230g • **CODE:** 5318



Sweet Apple Chutney

250g • **CODE:** 5321

## SAVOURY BISCUITS &amp; SNACKS



Water Biscuits with  
Sea Salt & Black Pepper

150g • **CODE:** 4813



Original Oatcakes

200g • **CODE:** 4814



Cheese Biscuits

75g • **CODE:** 5303



Rosemary Focaccia Bread Thins

100g • **CODE:** 4605



Tomato & Black Olive Bread Thins

100g • **CODE:** 4487



Sweet Chilli & Garlic Flatbreads

130g • **CODE:** 4604



Seeded Beetroot Flatbreads

130g • **CODE:** 4903



Olive & Garlic Wheat Flatbreads

130g • **CODE:** 4607



Tomato & Basil Flatbreads

130g • **CODE:** 4608



Cheese Flatbreads

130g • **CODE:** 4826



Cheese & Chilli Shortbreads

100g • **CODE:** 4394



## SAVOURY BISCUITS & SNACKS



Cheese Wafers with  
Honey & Mustard

75g • **CODE:** 5304



Gouda Cheese Melts

75g • **CODE:** 5301



Roquefort Cheese Melts

75g • **CODE:** 5302



Cheddar Cheese Crumbles

75g • **CODE:** 5292



Cheddar Cheese Biscuits

100g • **CODE:** 4490



Cheese Wafers with  
Sea Salt & Black Pepper

75g • **CODE:** 5305



Cheddar Cheese Straws

100g • **CODE:** 4815



Savoury Biscuits Selection

390g • **CODE:** 4005



## NUTS

Baked Salted Classic Mixed Nuts

95g • **CODE:** 4500

Baked Sweet Chilli Peanuts & Cashews

90g • **CODE:** 4501

Hickory Smoked Almonds

95g • **CODE:** 4502

Caramelised Peanuts with Sesame

80g • **CODE:** 4503

Salted Cashew Nuts

95g • **CODE:** 4504

---

PRESERVES & TABLE SAUCES

---



Wild Strawberry Preserve

280g · **CODE:** 4230

## PRESERVES &amp; MARMALADES



Lemon Curd

275g • **CODE:** 5306

Strawberry Preserve

280g • **CODE:** 5310

Raspberry Preserve

280g • **CODE:** 5311Fine Cut  
Three Fruit Marmalade280g • **CODE:** 5308

Ginger Preserve

280g • **CODE:** 5312

Gingerbread Honey

200g • **CODE:** 4225

Honey with Strawberries

200g • **CODE:** 4235

Honey with Orange

200g • **CODE:** 4226

Acacia Honey

300g • **CODE:** 5252

Acacia Honey with Comb

300g • **CODE:** 5206Fine Cut  
English Breakfast Marmalade280g • **CODE:** 5307Season's Pick  
Orange Marmalade290g • **CODE:** 4228

Apricot Preserve

280g • **CODE:** 5314

Black Cherry Preserve

280g • **CODE:** 5313

Spiced Plum Preserve

260g • **CODE:** 4842

Honeycomb in Carton

200g • **CODE:** 5200

Honeycomb in Carton

400g • **CODE:** 5201

Honeycomb in Tin

450g • **CODE:** 5209

Honeycomb in Wooden Frame

2.23kg • **CODE:** 5208

## HONEY



## CONDIMENTS



Mint Sauce

140g • **CODE:** 4614



Apple Sauce

140g • **CODE:** 4618



Cranberry Sauce

150g • **CODE:** 5324



Horseradish Cream

140g • **CODE:** 4617



Wholegrain Mustard

140g • **CODE:** 4616



English Mustard

140g • **CODE:** 4615



---

## DRINKS

---



[Hot Chocolate Bomb Selection](#)

160g · CODE: 4398

## TEABAGS



English Breakfast  
Whole Leaf Teabags

15x3g • **CODE:** 5212



Earl Grey  
Whole Leaf Teabags

15x3g • **CODE:** 5213



Afternoon Tea  
Whole Leaf Teabags

15x2g • **CODE:** 5326



Camomile Tea  
Whole Leaf Teabags

15x2g • **CODE:** 5328



Peppermint Tea  
Whole Leaf Teabags

15x2g • **CODE:** 5330



Green Tea with Citrus  
Whole Leaf Teabags

15x2g • **CODE:** 5332



Earl Grey Teabags

10x3g • **CODE:** 5275



English Breakfast Teabags

10x3g • **CODE:** 5225



Afternoon Blend Teabags

10x3g • **CODE:** 5276



English Breakfast Tea  
Red Edition

10x3g • **CODE:** 4511



English Breakfast  
Whole Leaf Teabags

15x3g • **CODE:** 5217



Earl Grey  
Whole Leaf Teabags

15x3g • **CODE:** 5218



Afternoon Tea  
Whole Leaf Teabags

15x3g • **CODE:** 5327



Camomile Tea  
Whole Leaf Teabags

15x2g • **CODE:** 5329



Peppermint Tea  
Whole Leaf Teabags

15x2g • **CODE:** 5331



Green Tea with Citrus  
Whole Leaf Teabags

15x2g • **CODE:** 5333



Earl Grey Teabags

30x3g • **CODE:** 4461



English Breakfast Teabags

30x3g • **CODE:** 4460



English Breakfast Teabags

10x3g • **CODE:** 5210



English Breakfast Tea  
Slimline

10x3g • **CODE:** 4147

## TEABAGS

## LOOSE LEAF TEAS



Peppermint Tisane Loose Leaf Tea

30g • **CODE:** 4994



Earl Grey Celebrated Loose Leaf Tea

90g • **CODE:** 4992



English Breakfast Loose Leaf Tea

100g • **CODE:** 4991



Green Tea & Jasmine Loose Leaf Tea

70g • **CODE:** 4993



Delicate Afternoon Blend Loose Leaf Tea

100g • **CODE:** 4990



Spiced Winter Blend Loose Leaf Tea

100g • **CODE:** 4989

## COFFEE



Café York Blend Coffee in Carton

50g • **CODE:** 4653



Café York Blend Coffee in Carton

227g • **CODE:** 4593



Café York Blend Coffee in Caddy

227g • **CODE:** 4462

## HOT CHOCOLATE



Milk Drinking Chocolate

250g • **CODE:** 4909Salted Caramel  
Drinking Chocolate250g • **CODE:** 4907

Dark Drinking Chocolate

250g • **CODE:** 4906

Cinnamon Drinking Chocolate

250g • **CODE:** 4908Sweet Orange  
Drinking Chocolate250g • **CODE:** 4152

Milk Drinking Chocolate

250g • **CODE:** 4919  
£23.40 PER CASE OF 6 (0% VAT)Salted Caramel  
Drinking Chocolate250g • **CODE:** 4917

Dark Drinking Chocolate

250g • **CODE:** 4916Rum & Caramel  
Drinking Chocolate250g • **CODE:** 4153Spiced Pumpkin  
Drinking Chocolate250g • **CODE:** 4151

## HOT CHOCOLATE STIRRERS

Trio of  
Drinking Chocolate Stirrers3x40g • **CODE:** 4281

Milk Chocolate Stirrer

40g • **CODE:** 4156

Salted Caramel Chocolate Stirrer

40g • **CODE:** 4157

Milk Chocolate &amp; Marshmallow Stirrer

40g • **CODE:** 4158

## JUICES & PRESSES



Elderflower Presse

250ml • **CODE:** 4621

Raspberry Lemonade

250ml • **CODE:** 4620



Orange Juice 100%

250ml • **CODE:** 4625



Apple Juice 100%

250ml • **CODE:** 4624



Apple & Strawberry Juice

250ml • **CODE:** 4622



Orange Juice 100%

750ml • **CODE:** 3046



Apple Juice 100%

750ml • **CODE:** 3047



Apple & Mango Juice

250ml • **CODE:** 4623

SPECIAL OCCASIONS & SEASONAL



### The Breakfast In Bed Hamper

CODE: 3136



## OUR HAMPERS

There's something really special about receiving a gift hamper. Opening it, sifting through the packaging and discovering the treats inside, creating a real sense of occasion. Our carefully curated and lovingly packed gift hampers are bursting with tempting treats and little delights perfect for any occasion. Available in steamed wicker, wooden crates and beautiful gift boxes and tins, all designed to be used over and over once the goodies inside have been devoured.

These are just a few of our best selling hampers, for more information on hampers and gifts please visit [cartwrightandbutler.co.uk](http://cartwrightandbutler.co.uk) or contact your account manager.



Family Feasting Picnic Hamper

CODE: 3146



The Grosmont Hamper

CODE: 3121



The Bolton Abbey Hamper

CODE: 3547



The Luxury Grand Harrogate Hamper

CODE: 3127



## THE EASTER RANGE

There's so much more to Easter than chocolate! Whether you're looking for an Easter hamper that doesn't come in an egg shape, or want to make Easter get-togethers with family and loved ones extra special, these brilliant goodies are the perfect Easter gift idea for families to celebrate.



Luxury Belgian Chocolate Eggs

100g • **CODE:** 4146

A Selection of white, milk and dark chocolate eggs with rich praline cream filling which deliver a truly velvety taste.



Simnel Cake

550g • **CODE:** 4472

Our classic Simnel Cake with a new & improved recipe!



Mini Chocolate Easter Eggs

200g • **CODE:** 4397

Sweet, rich & deliciously chocolatey are all words to describe these wonderful additions to our Easter range.



Easter Biscuits

200g • **CODE:** 4160

Making Easter teatime extra special with these delicious biscuits, lightly spiced with cinnamon and studded with sultanas.



AUTUMN RANGE



Blood Orange Chocolate Stirrer

40g • **CODE:** 4165



Pumpkin Spiced Hot Chocolate

**CODE:** 4164



Pumpkin Spiced Shortbread

200g • **CODE:** 4166



Season's Pick Autumn Biscuits

200g • **CODE:** 4170



## OUR BAKERY

---

We're very excited to introduce our brand new bakery to the C&B family.

Our range includes luscious loaf cakes drizzled with chocolate to traditional fruit cakes topped with sweet, jewelled fruits. All of our cakes come perfectly packaged in reusable tins. Carefully baked with extra butter for a luxurious texture and expertly decorated.

Our specialist development team will be creating new and exciting gourmet cakes that are sure to be real showstoppers.



# SHOW US YOUR SHELVES!



MOSS & MOOR, ILKLEY



LEONIDAS



PUGH'S AT RADYR



POPLAR'S



NEWLYNS FARM SHOP



BLUE DIAMOND, BRIDGEMERE



FARMER COPLEY'S



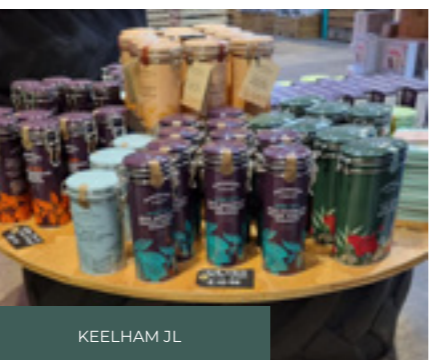
WEETONS, LEEDS



ROSEBOURNE, ALDERMASTON



NOTCUTTS, NORWICH



KEELHAM JL



LEONIDAS



BLUE DIAMOND, BRIDGFORD



BRIGG GARDEN CENTRE



WARBECK GARDEN CENTRE



DAVID JONES, BONDI JUNCTION



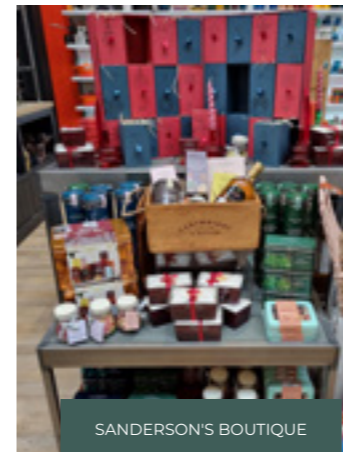
FRANKIE'S FARM SHOP



WEETONS, LEEDS



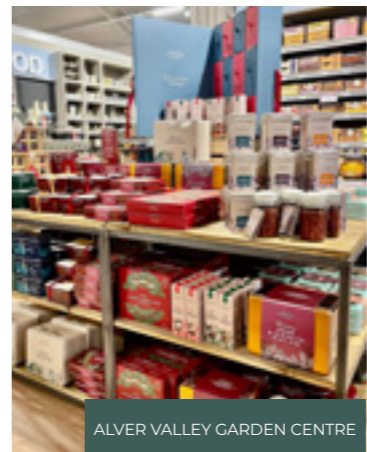
BURY LANE FARM SHOP



SANDERSON'S BOUTIQUE



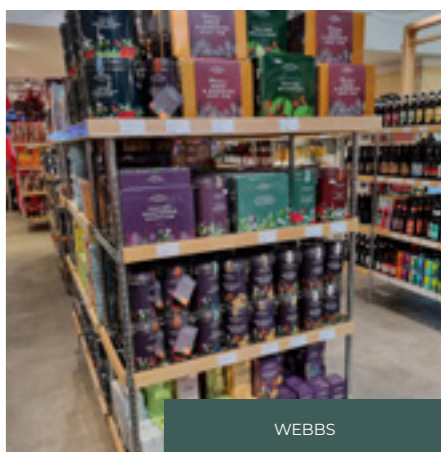
WINDSOR FARM SHOP



ALVER VALLEY GARDEN CENTRE



NOTCUTTS, MAIDSTONE



WEBBS

## SUSTAINABILITY

---

### Be Good, Do Good

#### Our sustainability journey

Cartwright & Butler and Moordale Foods are committed to being responsible brands. Through a set of strong moral practices, we pledge to be good and do good, and we aim to make a positive impact on our customers, our suppliers, the environment, and the wider community.

As a business, we are constantly looking for innovative new ways to act responsibly, ethically, and sustainably whether this is in our new product development, our operations, or our relationships with suppliers and customers. We work hard to ensure our Packaging, our Products, our Relationships with Suppliers, our Communities and our Colleagues support our commitment to being and doing good.



INCREASING OUR  
RECYCLABILITY &  
REUSABILITY

CARTWRIGHT  
ENGLAND  
& BUTLER

*Ecologi*  
climate  
positive  
workforce



Too Good To Go

## HOW TO ORDER

---

Use your personal login\* for 24-7 ordering  
at **cartwrightandbutler.co.uk**

Telephone on **03033 001 005**  
or email **sales@cartwrightandbutler.co.uk\***

### Becoming a Stockist

If you are interested in becoming a Cartwright & Butler brand stockist, please visit [cartwrightandbutler.co.uk](http://cartwrightandbutler.co.uk) and fill out the application form.

### Terms & Conditions

Cartwright & Butler is the trading name of Moordale Foods Limited. The prices shown in this catalogue denote VAT applicable at the time of going to print. The company reserves the right to change listed prices without prior notice and to charge interest on accounts which are not paid in accordance with terms and conditions. We reserve the right to substitute any products in our hampers with a product of equal or higher value. Telephone calls may be recorded for quality and training purposes.

Full details of our Terms & Conditions can be found by visiting  
**cartwrightandbutler.co.uk**

### Shipping

Orders over £400 will qualify for free shipping on our 2-3 working day service.  
Orders under £400 will be subject to a £25 shipping charge on our standard 2-3 working day dispatch time.  
Same-day dispatch for next working day delivery is available for orders received by 12 noon  
with a small charge of £15 per order.  
Outside UK Mainland Price on application.

© All rights reserved, no part of this publication may be reproduced in any material form (including photocopying or storing in any medium by electronic means and whether or not transiently, or incidentally to some other use of this publication) without the prior written consent of the copyright owner. Applications to do so should be addressed to Moordale Foods Limited.



CARTWRIGHT & BUTLER

**CARTWRIGHTANDBUTLER.CO.UK • 03033 001 005**

PO BOX 298 BEVERLEY HU17 6FG, ENGLAND

JOYCE HOUSE, 21-23 HOLLES STREET, DUBLIN 2, IRELAND